



## **The Reach of Public Transit - Connecting All of New York State**

Public transportation connects communities in every part of New York State. More than 100 public transit systems serve urban and rural communities throughout New York. From Long Island to the Hudson Valley, from the Southern Tier to the North Country, from the Capital Region to Western New York, transit services span the state to create access to jobs, healthcare, education, and recreation that provide mobility and support the economy.

Every county in New York State is served by public transit. The following map shows transit systems in each county of the state and lists the organization that provides service in those counties. These services are fixed routes, express and bus rapid transit routes, on-demand, and paratransit services for people with disabilities. They are provided by multi-county public authorities, county and municipal run systems, and private, regional and intercity bus operators. All these public transit agencies combine to provide services that connect New Yorkers and their communities.

## **Public Transit Benefits Those Who Use It and Those Who Don't**

- Transit services connect New York communities and support economic development. Providing more mobility benefits everyone, whether they use these services or not.
- Vibrant transit systems reduce the number of cars on New York roadways, resulting in less congestion, improved travel times, cleaner air, and improved quality of life.
- Efficient transit services stimulate economies throughout New York by providing workers and customers with convenient alternatives to driving.
- High quality transit services move students, faculty and staff at colleges and universities throughout the state.
- Effective transit services transport our neighbors, family and friends to medical appointments, shopping and social activities in New York communities.
- The transit industry supports economies throughout the state by providing jobs and generating business for suppliers of goods and services.

230 Washington Avenue Extension, Suite 101, Albany, NY 12203

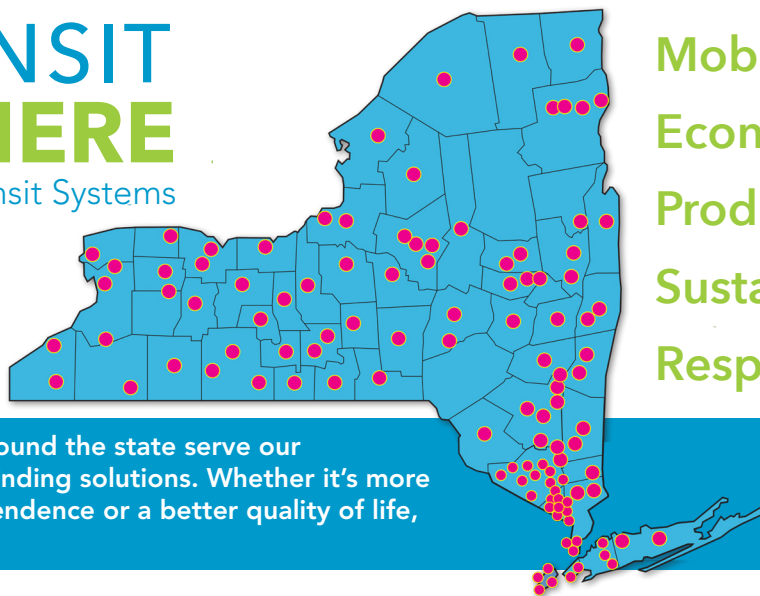
518.417.4020 PHONE / 518.463.8656 FAX

[info@nytransit.org](mailto:info@nytransit.org) / [www.nytransit.org](http://www.nytransit.org)

# PUBLIC TRANSIT TAKES US THERE

## Map of New York State Public Transit Systems

For more information, visit the  
New York Public Transit Association  
online at: [www.nytransit.org](http://www.nytransit.org)



Mobile.  
Economic.  
Productive.  
Sustainable.  
Responsible.

Over 100 Public Transportation Systems around the state serve our communities and play a significant role in finding solutions. Whether it's more jobs, a cleaner environment, energy independence or a better quality of life, public transportation takes us there!

### ALBANY COUNTY

Capital District Transportation Authority (CDTA)

### ALLEGANY COUNTY

Allegheny County Transit  
Allegheny County NYSARC

### BRONX COUNTY

Metropolitan Transportation Authority (MTA)  
• Metro North Railroad (MNCR)  
• MTA Bus  
• New York City Transit (NYCT)

### BROOME COUNTY

Broome County Department of Public Transportation

### CATTARAUGUS COUNTY

Olean Area Transit

### CAYUGA COUNTY

Central New York Regional Transportation Authority (CNYRTA)  
• Centro of Cayuga

### CHAUTAUQUA COUNTY

Chautauqua Area Regional Transit System (CARTS)

### CHEMUNG COUNTY

Chemung County Transit System (CTRAN)

### CHENANGO COUNTY

Chenango County Public Transit (CCPT) First Transit  
Chenango Valley Bus Lines

### CLINTON COUNTY

Clinton County Public Transportation (CCPT)

### COLUMBIA COUNTY

Columbia County Public Transportation  
Hudson Minibus System

### CORTLAND COUNTY

Central New York Regional Transportation Authority

### DUTCHESS COUNTY

Dutchess County Public Transit  
Metropolitan Transportation Authority (MTA)  
• Metro North Railroad (MNCR)

### ERIE COUNTY

Niagara Frontier Transportation Authority (NFTA)  
Fullington Trailways

### ESSEX COUNTY

Essex County Public Transportation (CHAMP)  
• Crossing Communities  
Placid XPRSS  
Town of Keene

### FRANKLIN COUNTY

Franklin County Public Transportation

### FULTON COUNTY

Fulton County Commuter  
Gloversville Transit System  
I. Persch Transit, Inc.

### GENESEE COUNTY

Regional Transit Service, Inc. (RTS Genesee)

### GREENE COUNTY

Greene County Transit System

### HERKIMER COUNTY

Birnie Bus Services, Inc.  
Herkimer County Public Transportation

### JEFFERSON COUNTY

Watertown CitiBus System

### KINGS COUNTY

Metropolitan Transportation Authority (MTA)  
• Long Island Railroad (LIRR)  
• MTA Bus  
• New York City Transit (NYCT)

### LEWIS COUNTY

Lewis County Public Transportation

### LIVINGSTON COUNTY

Regional Transit Service, Inc. (RTS Livingston)  
• Livingston Area Transportation Service (LATS)

### MADISON COUNTY

Birnie Bus Services, Inc.  
Madison Transit System

### MONROE COUNTY

Regional Transit Service, Inc. RTS Access

### MONTGOMERY COUNTY

Brown Coach  
CDTA

### NASSAU COUNTY

City of Glen Cove Bus Service  
City of Long Beach Bus  
Huntington Area Rapid Transit (HART)  
Metropolitan Transportation Authority (MTA)  
• Long Island Rail Road (LIRR)  
NICE Bus

### NEW YORK COUNTY

Metropolitan Transportation Authority (MTA)  
• Long Island Railroad (LIRR)  
• Metro North Railroad (MNCR)  
• MTA Bus  
• New York City Transit (NYCT)

### NIAGARA COUNTY

Niagara Falls Coach Lines  
Niagara Frontier Transportation Authority (NFTA)  
Rural Niagara Transit

### ONEIDA COUNTY

Birnie Bus Services, Inc.  
Central New York Regional Transportation Authority (CNYRTA)  
• Centro of Oneida  
Oneida County Rural Transit (OCRT)

### ONONDAGA COUNTY

Central New York Regional Transportation Authority (CNYRTA)  
• Centro

### ONTARIO COUNTY

Regional Transit Service, Inc. (RTS Ontario)

### ORANGE COUNTY

City of Port Jervis, Dial-A-Bus  
Hudson Transit / Shortline  
International Bus Services  
Metropolitan Transportation Authority (MTA)  
• Metro North Railroad (MNCR)  
Middletown Transit Corporation  
Monroe Bus Company  
Monsey Trails Bus  
Newburgh Beacon Bus Corporation  
New Jersey Transit Bus

### ORANGE COUNTY

Orange County Department of Planning  
Town of Warwick Dial-A-Bus  
Town of Highlands Dial-A-Bus  
Town of Monroe Dial-A-Bus  
Town of Wallkill Transit (including Dial-A-Bus)  
Towns of Goshen/Chester  
Dial-A-Bus  
Towns of Montgomery-Crawford  
Dial-A-Bus  
Town of New Windsor-Cornwall  
Dial-A-Bus  
Town of Newburgh Dial-A-Bus  
Village of Kiryas Joel

### ORLEANS COUNTY

Regional Transit Service, Inc. (RTS Orleans)  
• Orleans Transit Service (OTS)

### OSWEGO COUNTY

Central New York Regional Transportation Authority (CNYRTA)  
• Centro of Oswego  
Oswego Opportunities

### OTSEGO COUNTY

Birnie Bus Service Inc.  
Oneonta Public Transit  
Otsego Express Inc.  
Otsego County Chapter NYSARC  
Village of Cooperstown

### PUTNAM COUNTY

Putnam Area Rapid Transit (PART)  
Metropolitan Transportation Authority (MTA)  
• Metro North Railroad (MNCR)

### QUEENS COUNTY

Metropolitan Transportation Authority (MTA)  
• Long Island Railroad (LIRR)  
• MTA Bus  
• New York City Transit (NYCT)

### RENSSELAER COUNTY

Capital District Transportation Authority (CDTA)  
Rensselaer County Public Transportation  
• Yankee Trails

### RICHMOND COUNTY

Metropolitan Transportation Authority (MTA)  
• MTA Bus  
• New York City Transit (NYCT)  
• Staten Island Railway  
Staten Island Ferry

### ROCKLAND COUNTY

Clarkstown Mini-Trans  
Hudson Link  
Hudson Transit / Shortline  
Kaser Bus Service  
Metropolitan Transportation Authority (MTA)  
• Metro North Railroad (MNCR)  
Monsey Trails Bus  
Rockland Coaches  
Spring Valley Jitney Bus  
Transport of Rockland (TOR)

### ST. LAWRENCE COUNTY

St. Lawrence County Public Transportation  
St. Lawrence County NYSARC

### SARATOGA COUNTY

Capital District Transportation Authority (CDTA)  
City of Mechanicville Public Transit  
Upstate Transit of Saratoga

### SCHENECTADY COUNTY

Capital District Transportation Authority (CDTA)

### SCHOHARIE COUNTY

Schoharie County Public Transportation

### SCHUYLER COUNTY

Schuyler County Transit

### SENECA COUNTY

Regional Transit Service, Inc. (RTS Seneca)  
• Seneca Transit Services (STS)

### STEBEN COUNTY

Corning-Erwin Area Transit Systems (CEATS)  
Hornell Area Transit (HAT)  
Steuben County Transit

### SUFFOLK COUNTY

Suffolk County Transportation  
Metropolitan Transportation Authority (MTA)  
• Long Island Rail Road (LIRR)

### SULLIVAN COUNTY

Sullivan County Transportation  
Hudson Transit / Shortline

### TIOGA COUNTY

CTRAN

### TOMPKINS COUNTY

Tompkins Consolidated Area Transit (TCAT)  
Gadabout Transportation

### ULSTER COUNTY

Adirondack Trailways  
Arthur F. Mulligan  
City of Kingston – Citibus  
New York Trailways  
Pine Hill Trailways  
The Leprechaun Connection (TLC)  
Ulster County Area Transit (UCAT)

### WARREN COUNTY

CDTA

### WASHINGTON COUNTY

CDTA

### WAYNE COUNTY

Regional Transit Service, Inc. (RTS Wayne)  
• Wayne Area Transit Service (WATS)

### WESTCHESTER COUNTY

Hudson Link  
Metropolitan Transportation Authority (MTA)  
• Metro North Railroad (MNCR)  
Westchester County DOT (The Bee-Line System)

### WYOMING COUNTY

Regional Transit Service, Inc. (RTS Wyoming)  
• Wyoming Transit Service (WYTS)

### YATES COUNTY

Yates Transit Service